



# GAT MONTHLY MEMBERSHIP PROGRESS REPORT

Results as of: 10/31/2021

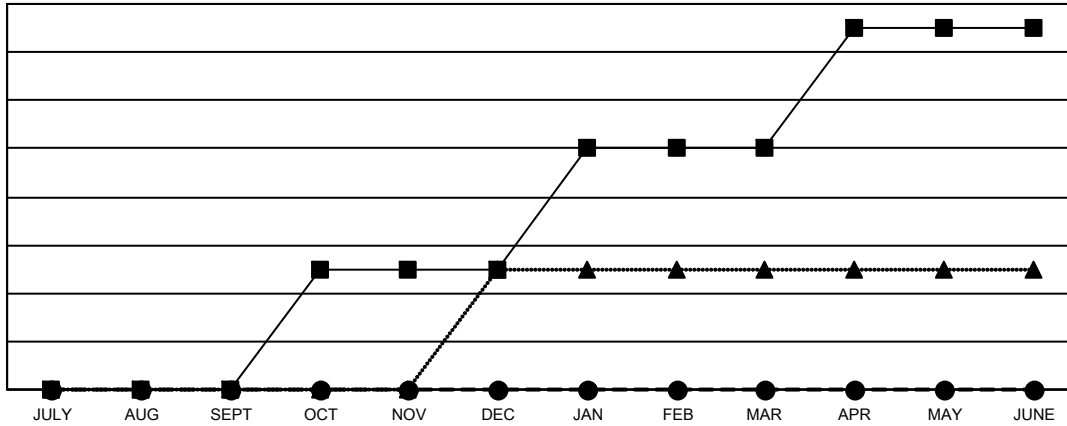
Multiple District 39

LOCATION: IDAHO

Clubs			
RESULTS FOR 2021-2022			
QUARTER	NEW CLUB GOAL	NEW CLUBS	DROPPED CLUBS
JULY/AUG/SEPT	0	0	1
OCT/NOV/DEC	1	0	0
JAN/FEB/MAR	1	0	0
APR/MAY/JUNE	1	0	0

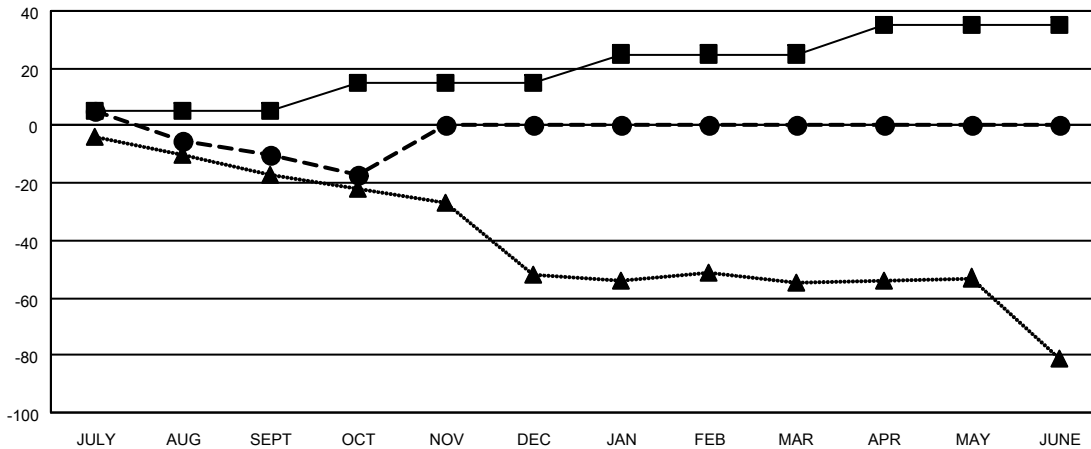
Members			
RESULTS FOR 2021-2022			
QUARTER	MEMBER GROWTH NET GOAL	MEMBER GROWTH ACTUAL	DROPPED MEMBERS ACTUAL (including transfers)
JULY/AUG/SEPT	5	36	45
OCT/NOV/DEC	10	11	17
JAN/FEB/MAR	10	0	0
APR/MAY/JUNE	10	0	0

GOALS AND ACTUAL NEW CLUBS CUMULATIVE



- CURRENT YEAR GOALS FOR NEW CLUBS
- CURRENT YEAR ACTUAL NEW CLUBS
- ▲- LAST YEAR ACTUAL NEW CLUBS

GOALS AND ACTUAL MEMBERS CUMULATIVE



- MEMBER GROWTH NET GOAL
- MEMBER GROWTH ACTUAL
- ▲- LAST YEAR MEMBERSHIP ACTUAL

<b>DROPPED CLUBS: 1</b>	16 CLUBS OF 55 ADDED 1 OR MORE NEW MEMBERS	<u>GENDER DISTRIBUTION</u>	
<u>DROPPED MEMBERS</u>		MALE	743 (61.51%)
DECEASED	11	FEMALE	465 (38.49%)
CLUB CANCELLED	0	NON BINARY	0 (0.00%)
OTHER	51	PREFER NOT TO ANSWER	0 (0.00%)
<b>TOTAL</b>	<b>62</b>	<b>TOTAL FAMILY UNIT MEMBERS 324</b>	
<a href="#">CLICK HERE FOR CUMULATIVE MEMBERSHIP DATA</a>		<b>FAMILY MEMBERS PAYING HALF DUES 166</b>	